

CASSINY

The Rise

Two and Three Bedroom Terrace Homes
By Cassiny Homes



CASSINY

MASTERPLAN



- KEY:
- 1 MAINT
 - 2 COM
 - 3 PRIV
 - 4 RAIS
 - 5 FUT
 - 6 PVL
 - 7 RE-V
 - 8 PL
 - 9 PRIV
 - 10 ENT
 - 11 INDI
 - 12 COM
 - 13 SIG
 - 14 GRO
 - 15 CAR
 - 16 STR
 - 1.2M
 - 1.8M
 - INDI
 - STAG



215-217 TRIANGLE ROAD MASSEY	L102 MASTERPLAN	DATE 22.11.2019	SCALE 1:300 @ A1, 1:600 @ A3	DRAWN BY CJ/MR	CHECKED BY MR	REVIEWED BY MR	ISSUED FOR REVIEW NOT FOR CONSTRUCTION	THIS DRAWING COPYRIGHT PERMITS
---------------------------------	--------------------	--------------------	---------------------------------	-------------------	------------------	-------------------	---	--------------------------------------

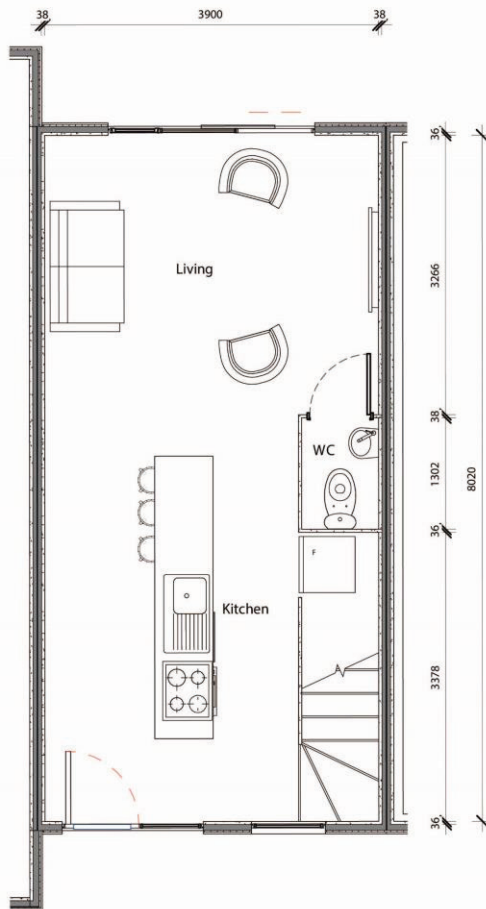
Master Plan is indicative only and not drawn to scale. These materials were issued for review not for construction. Every precaution has been taken to establish the accuracy at the time of printing however no responsibility will be taken for any errors or omissions. All information presented here is intended as a guide only.



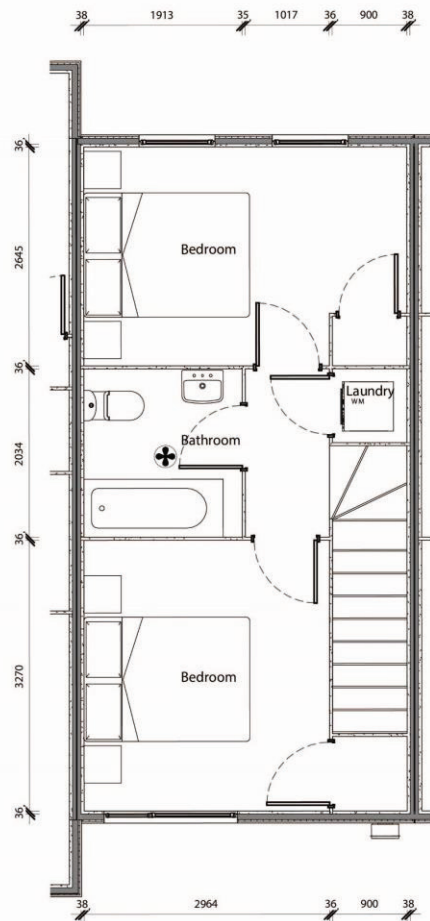
CASSINY

TYPE 2A	2 Bed	1 Bathroom
	1 Lounge	1 Carpark

Lot #	Lot Area	Ground Floor	First Floor	Total Floor Area
37	75	32	32	64



Stage 1 A2 Ground Floor Plan
1:50



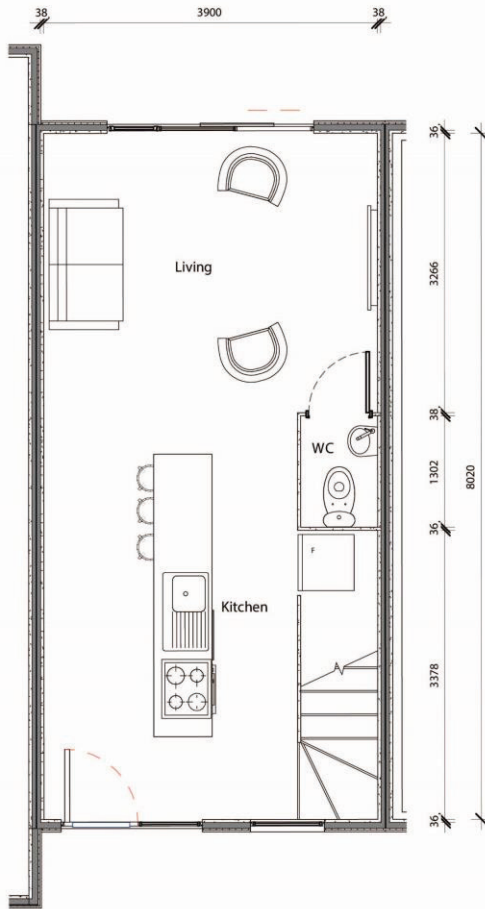
Stage 1 A2 First Floor Plan
1:50

Disclaimer: Cassiny Homes would like to clarify that All 2 Bedroom houses by default come with a shower cubicle only unlike the floor plan

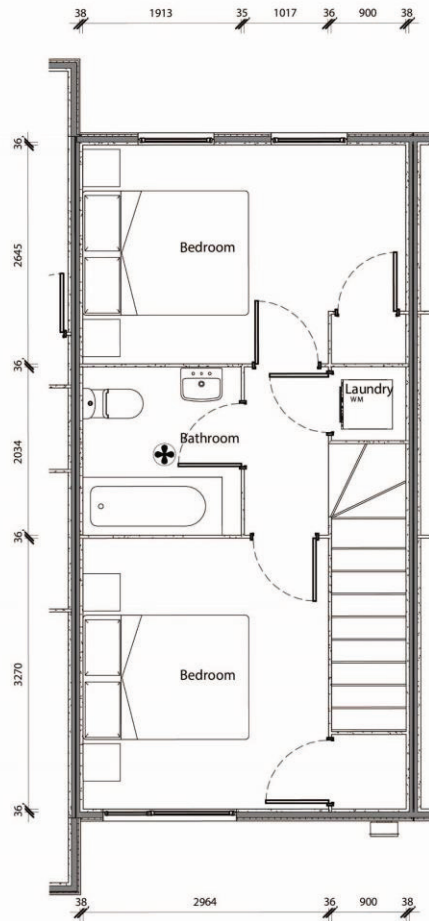
CASSINY

TYPE 2C	2 Bed	1 Bathroom
	1 Lounge	1 Carpark

Lot #	Lot Area	Ground Floor	First Floor	Total Floor Area
26	78	32	32	64



Stage 1 A2 Ground Floor Plan
1:50

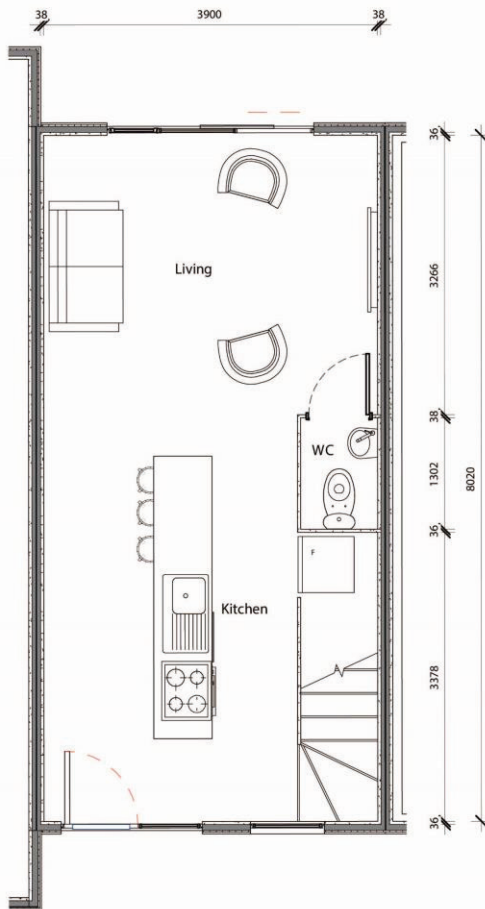


Stage 1 A2 First Floor Plan
1:50

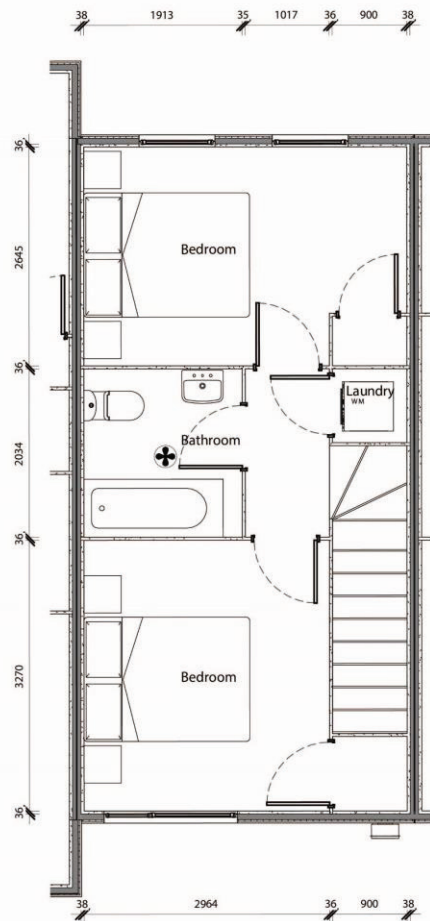
CASSINY

TYPE 2D	2 Bed	1 Bathroom
	1 Lounge	1 Carpark

Lot #	Lot Area	Ground Floor	First Floor	Total Floor Area
5	82	32	32	64
12	82	32	32	64
13	82	32	32	64
46	82	32	32	64



Stage 1 A2 Ground Floor Plan
1:50

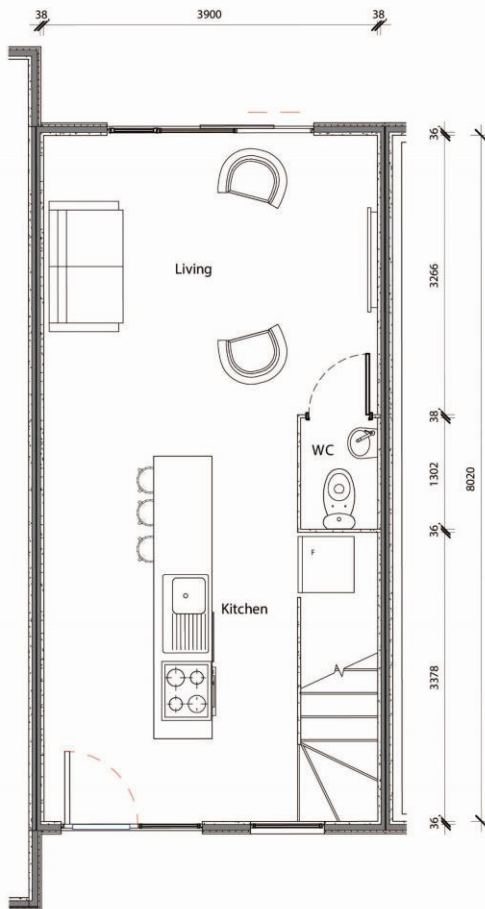


Stage 1 A2 First Floor Plan
1:50

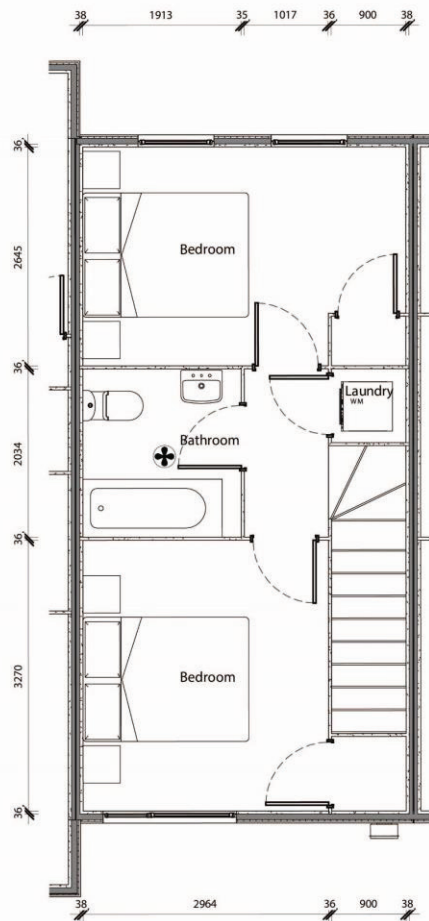
CASSINY

TYPE 2E	2 Bed	1 Bathroom
	1 Lounge	1 Carpark

Lot #	Lot Area	Ground Floor	First Floor	Total Floor Area
43	84	32	32	64
44	84	32	32	64
45	84	32	32	64



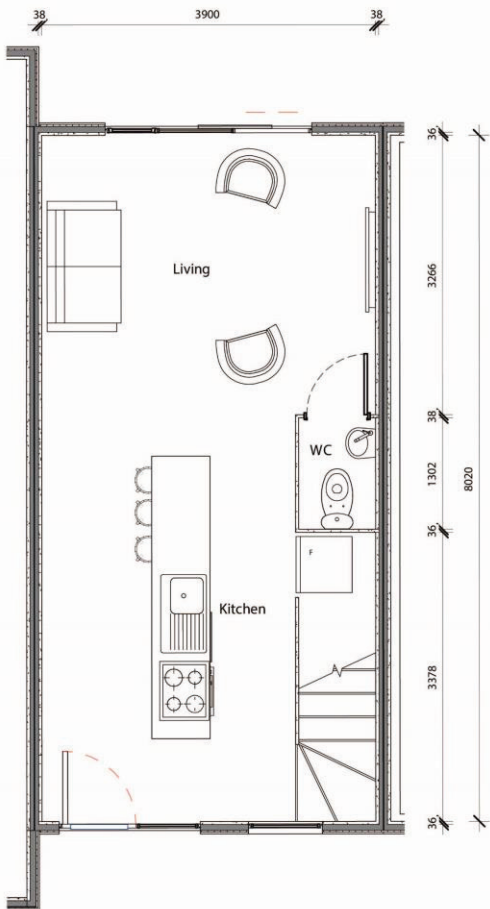
Stage 1 A2 Ground Floor Plan
1:50



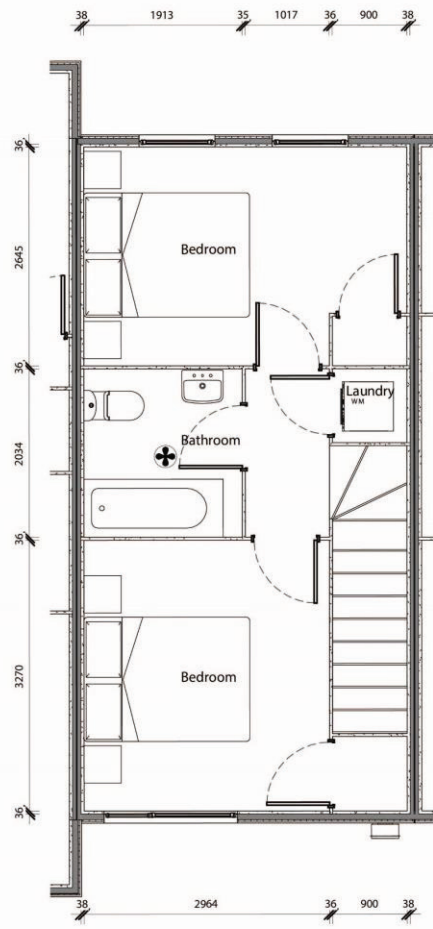
Stage 1 A2 First Floor Plan
1:50

TYPE 2F	2 Bed	1 Bathroom
	1 Lounge	1 Carpark

Lot #	Lot Area	Ground Floor	First Floor	Total Floor Area
6	85	32	32	64



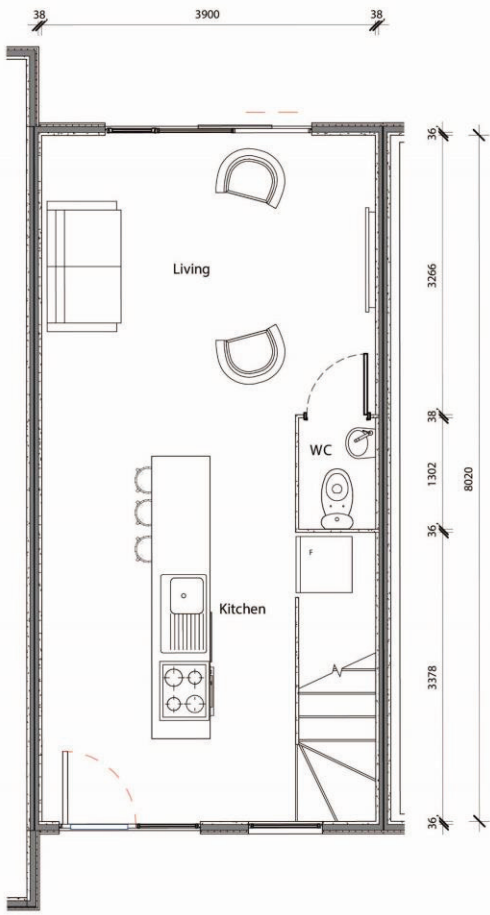
Stage 1 A2 Ground Floor Plan
1:50



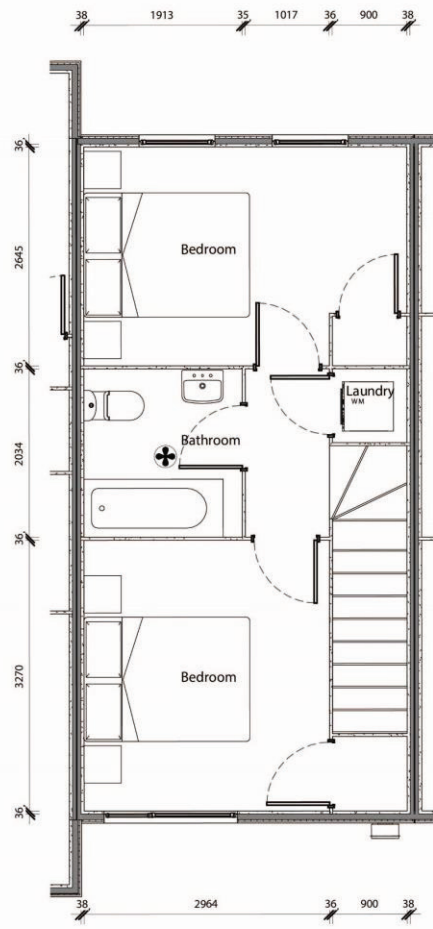
Stage 1 A2 First Floor Plan
1:50

TYPE 2G	2 Bed	1 Bathroom
	1 Lounge	1 Carpark

Lot #	Lot Area	Ground Floor	First Floor	Total Floor Area
20	88	32	32	64



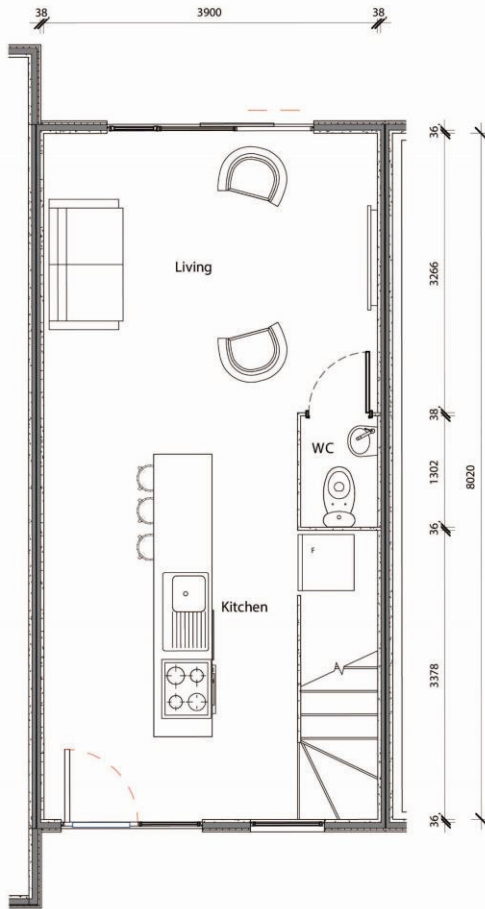
Stage 1 A2 Ground Floor Plan
1:50



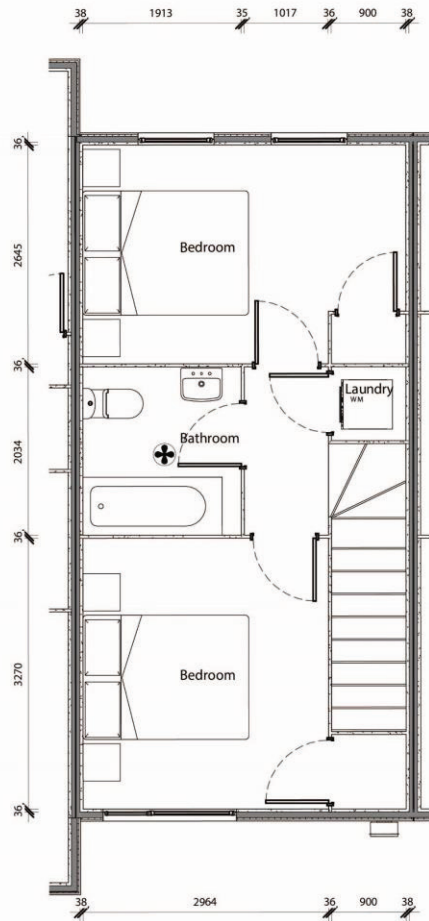
Stage 1 A2 First Floor Plan
1:50

TYPE 2H	2 Bed	1 Bathroom
	1 Lounge	1 Carpark

Lot #	Lot Area	Ground Floor	First Floor	Total Floor Area
48	90	32	32	64
49	90	32	32	64



Stage 1 A2 Ground Floor Plan
1:50

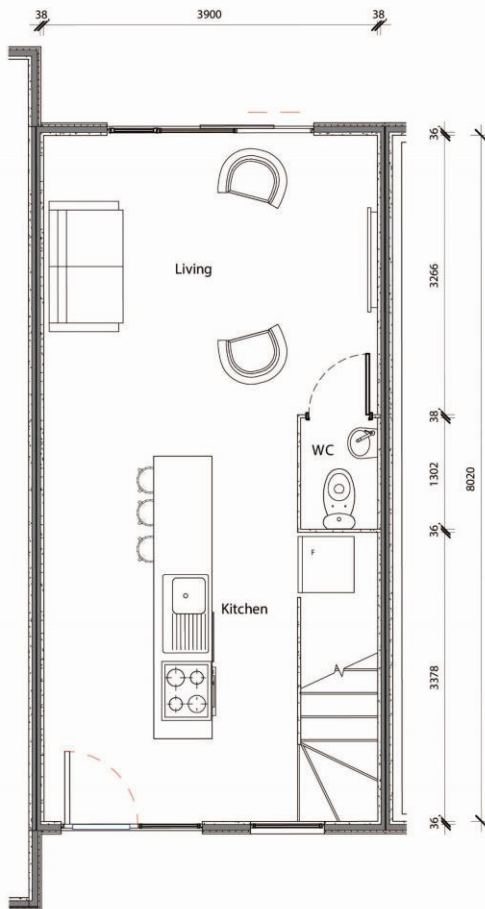


Stage 1 A2 First Floor Plan
1:50

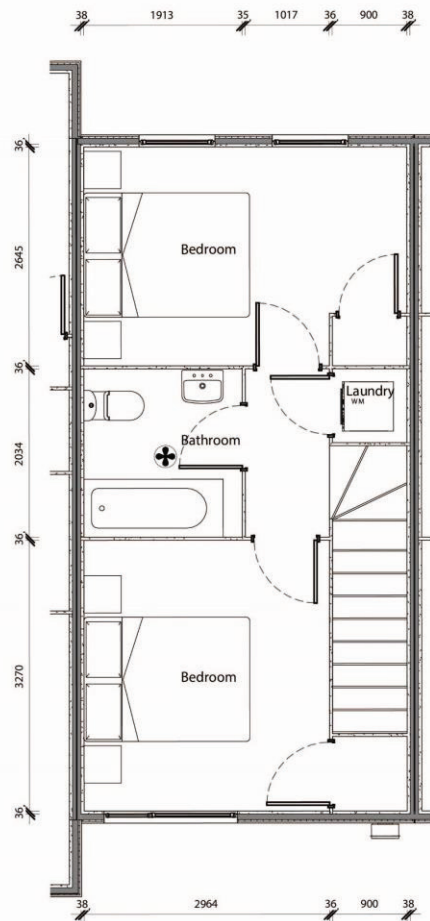
CASSINY

TYPE 21	2 Bed	1 Bathroom
	1 Lounge	1 Carpark

Lot #	Lot Area	Ground Floor	First Floor	Total Floor Area
21	93	32	32	64



Stage 1 A2 Ground Floor Plan
1:50

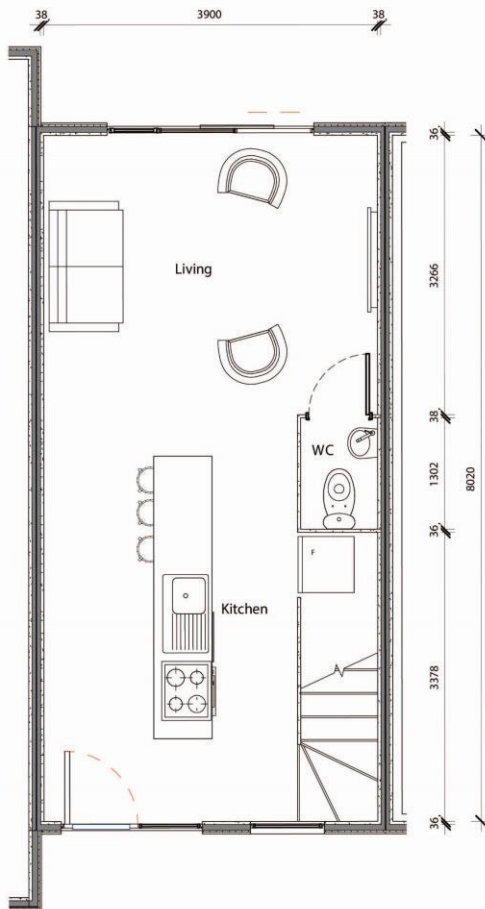


Stage 1 A2 First Floor Plan
1:50

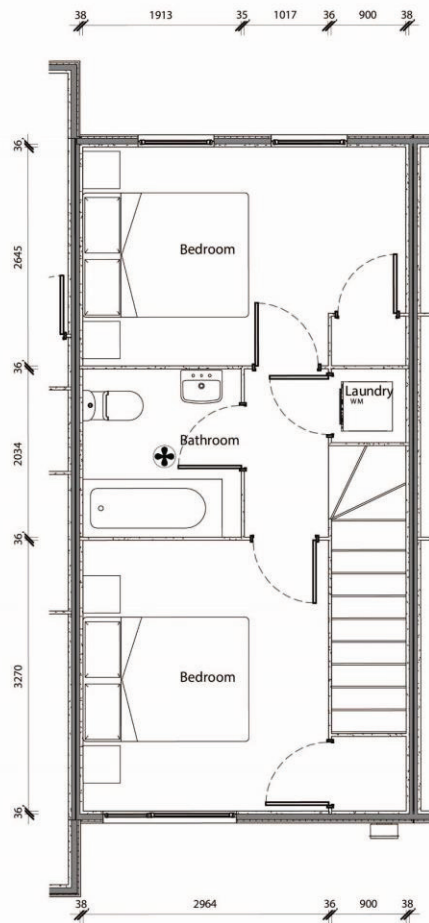
CASSINY

TYPE 2J	2 Bed	1 Bathroom
	1 Lounge	1 Carpark

Lot #	Lot Area	Ground Floor	First Floor	Total Floor Area
47	96	32	32	64



Stage 1 A2 Ground Floor Plan
1:50

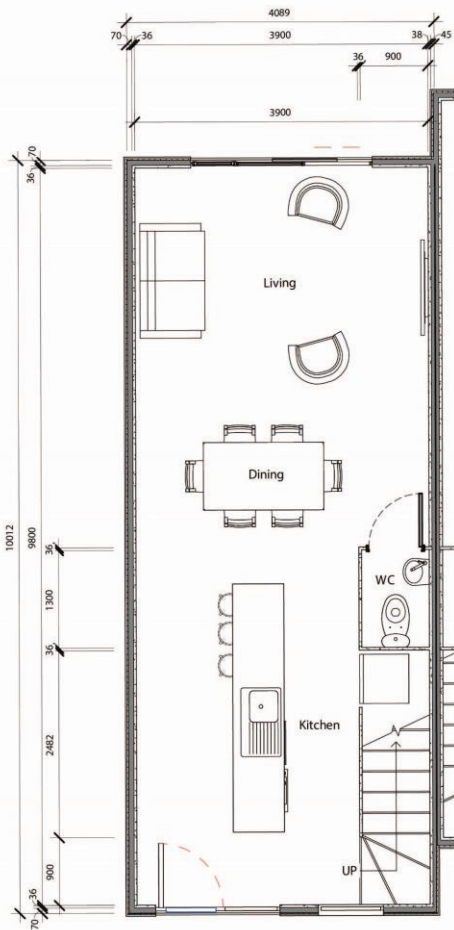


Stage 1 A2 First Floor Plan
1:50

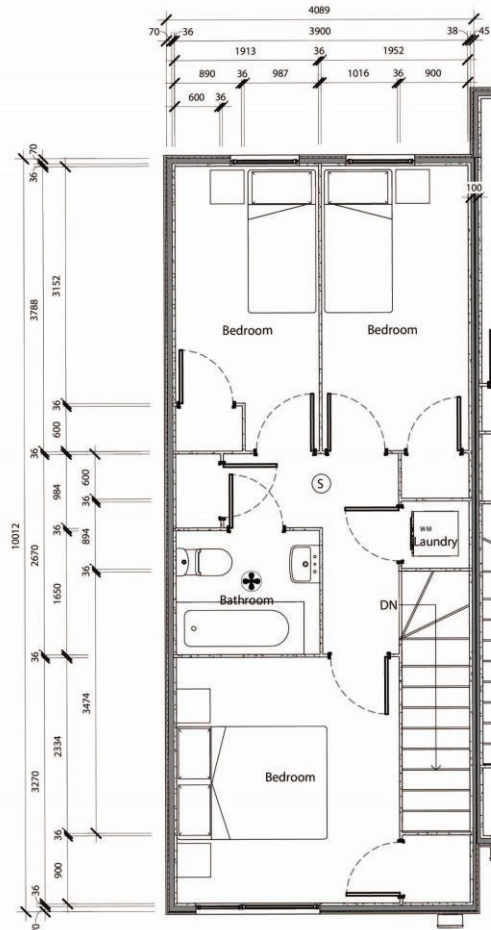
CASSINY

TYPE 3B	3 Bed	1 Bathroom
	1 Lounge	1 Carpark

Lot #	Lot Area	Ground Floor	First Floor	Total Floor Area
25	81	40	40	80



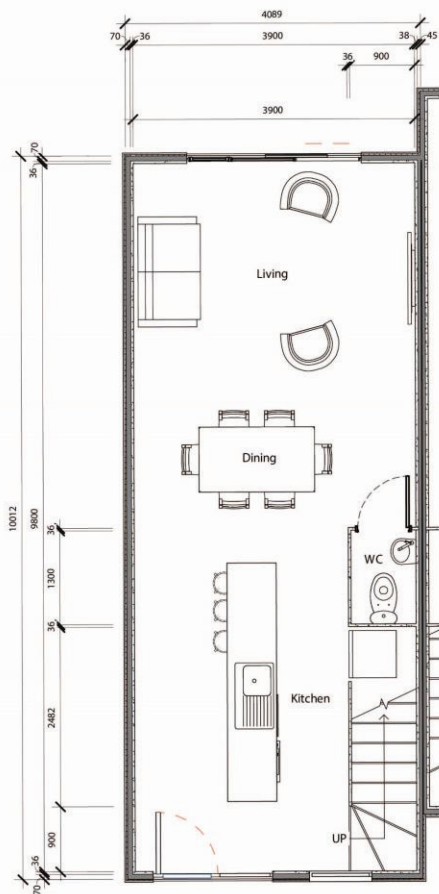
Stage 1 A1 Ground Floor Plan
1:50
note:
Type A1 end unit no windows on side wall
Type A3 intermediate unit similar to A1 refer to pt. ans for layout
Type A4 end unit windows on side wall



Stage 1 A1 First Floor Plan
1:50
note:
Type A1 end unit no windows on side wall
Type A3 intermediate unit similar to A1 refer to pt. ans for layout
Type A4 end unit windows on side wall

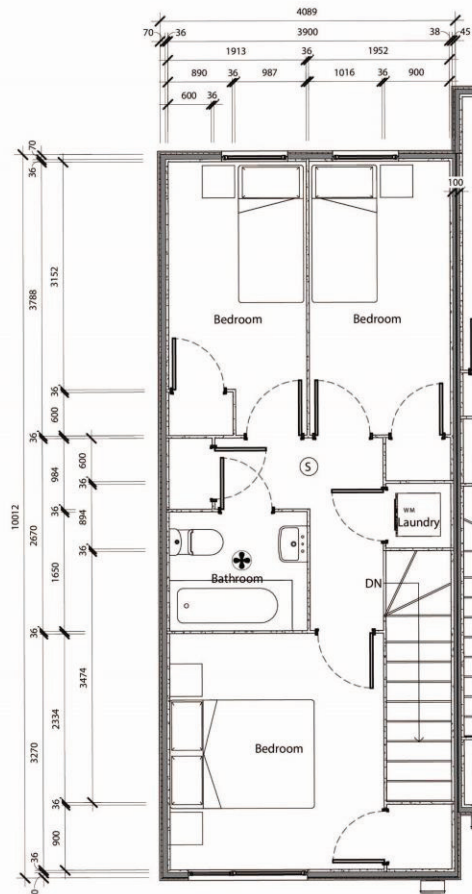
TYPE 3C	3 Bed	1 Bathroom
	1 Lounge	1 Carpark

Lot #	Lot Area	Ground Floor	First Floor	Total Floor Area
2	82	40	40	80
3	82	40	40	80
8	82	40	40	80
9	82	40	40	80
11	82	40	40	80



Stage 1 A1 Ground Floor Plan
1:50

note:
Type A1 end unit no windows on side wall
Type A3 intermediate unit similar to A1 refer to pt. ans for layout
Type A4 end unit windows on side wall

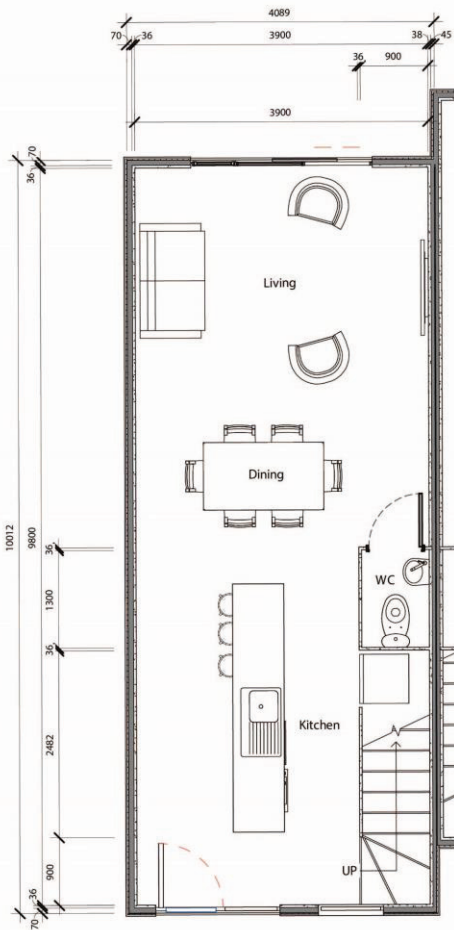


Stage 1 A1 First Floor Plan
1:50

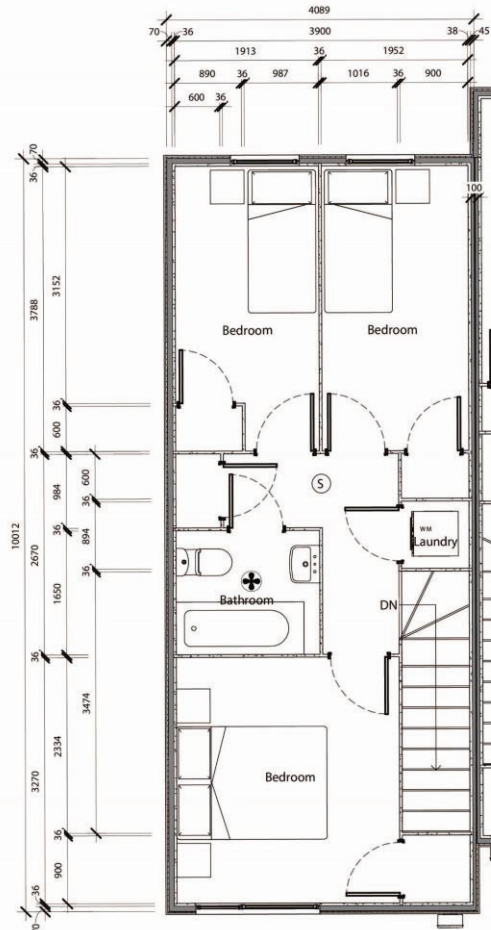
note:
Type A1 end unit no windows on side wall
Type A3 intermediate unit similar to A1 refer to pt. ans for layout
Type A4 end unit windows on side wall

TYPE 3D	3 Bed	1 Bathroom
	1 Lounge	1 Carpark

Lot #	Lot Area	Ground Floor	First Floor	Total Floor Area
4	83	40	40	80
10	83	40	40	80
42	83	40	40	80



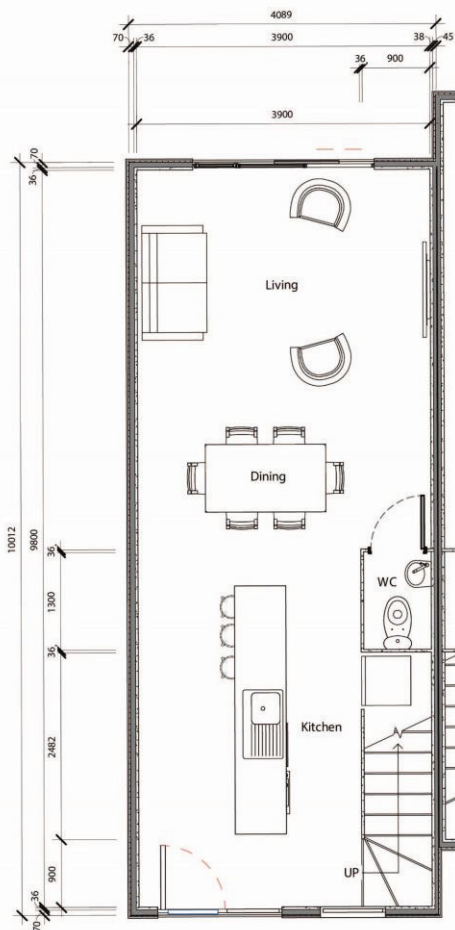
Stage 1 A1 Ground Floor Plan
1:50
note:
Type A1 end unit no windows on side wall
Type A3 intermediate unit similar to A1 refer to pt. ans for layout
Type A4 end unit windows on side wall



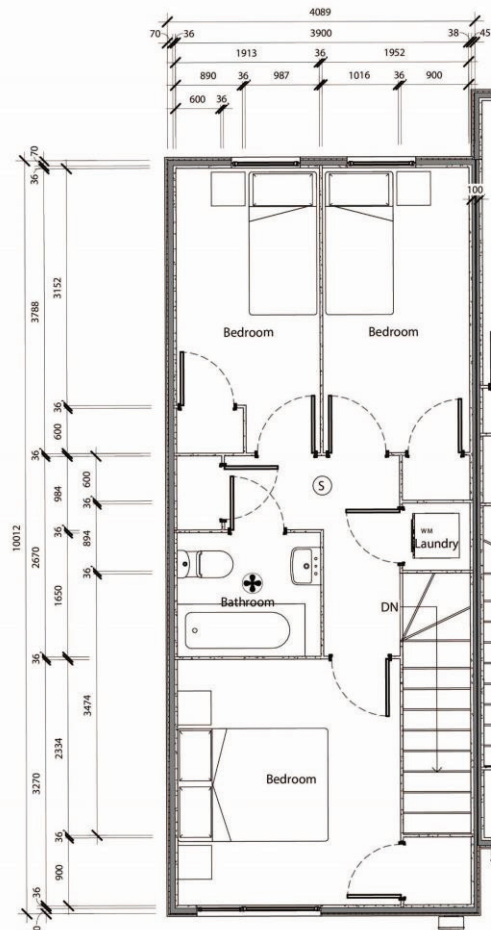
Stage 1 A1 First Floor Plan
1:50
note:
Type A1 end unit no windows on side wall
Type A3 intermediate unit similar to A1 refer to pt. ans for layout
Type A4 end unit windows on side wall

TYPE 3E	3 Bed	1 Bathroom
	1 Lounge	1 Carpark

Lot #	Lot Area	Ground Floor	First Floor	Total Floor Area
39	84	40	40	80
40	84	40	40	80
41	84	40	40	80



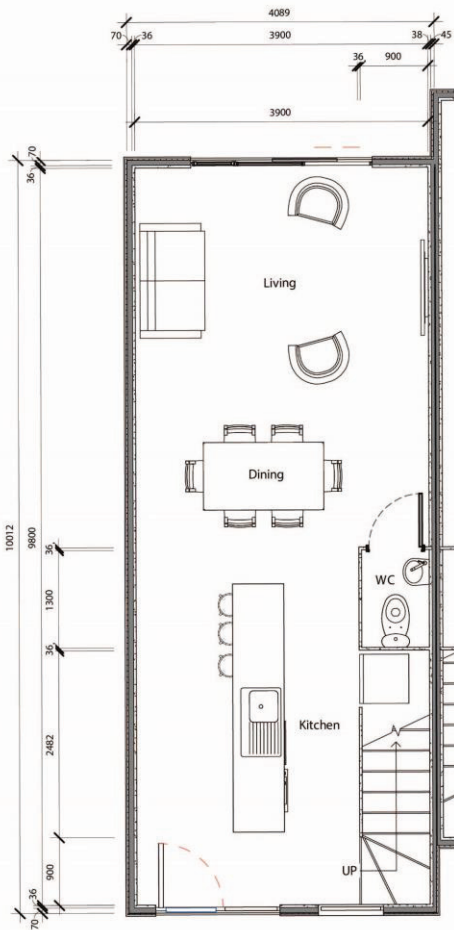
Stage 1 A1 Ground Floor Plan
1:50
note:
Type A1 end unit no windows on side wall
Type A3 intermediate unit similar to A1 refer to pt. ans for layout
Type A4 end unit windows on side wall



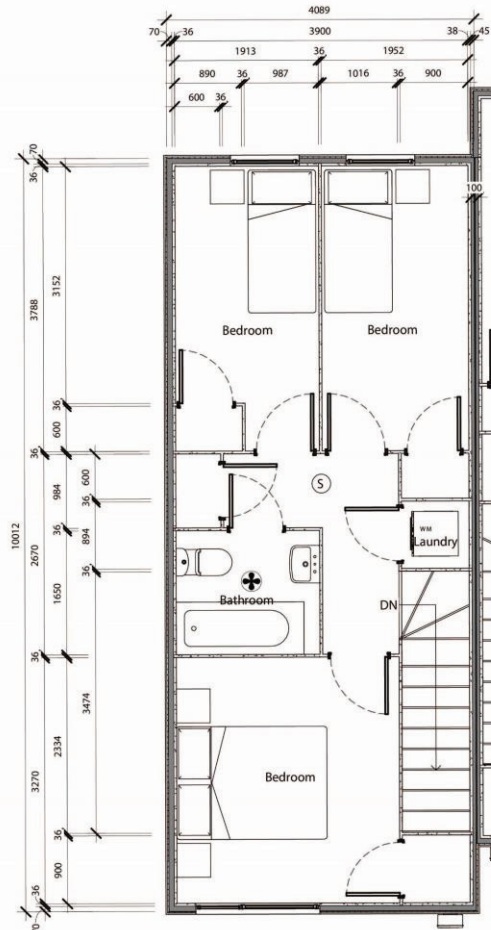
Stage 1 A1 First Floor Plan
1:50
note:
Type A1 end unit no windows on side wall
Type A3 intermediate unit similar to A1 refer to pt. ans for layout
Type A4 end unit windows on side wall

TYPE 3F	3 Bed	1 Bathroom
	1 Lounge	1 Carpark

Lot #	Lot Area	Ground Floor	First Floor	Total Floor Area
7	85	40	40	80



Stage 1 A1 Ground Floor Plan
1:50
note:
Type A1 end unit no windows on side wall
Type A3 intermediate unit similar to A1 refer to pt. ans for layout
Type A4 end unit windows on side wall

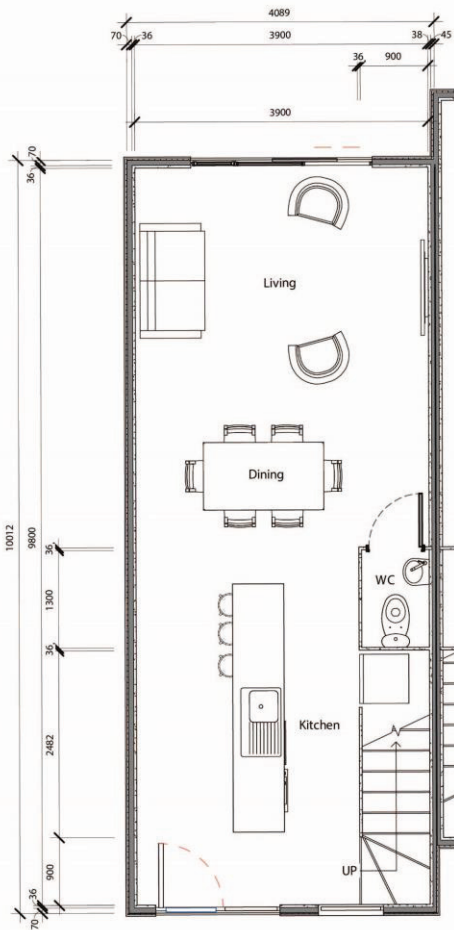


Stage 1 A1 First Floor Plan
1:50
note:
Type A1 end unit no windows on side wall
Type A3 intermediate unit similar to A1 refer to pt. ans for layout
Type A4 end unit windows on side wall

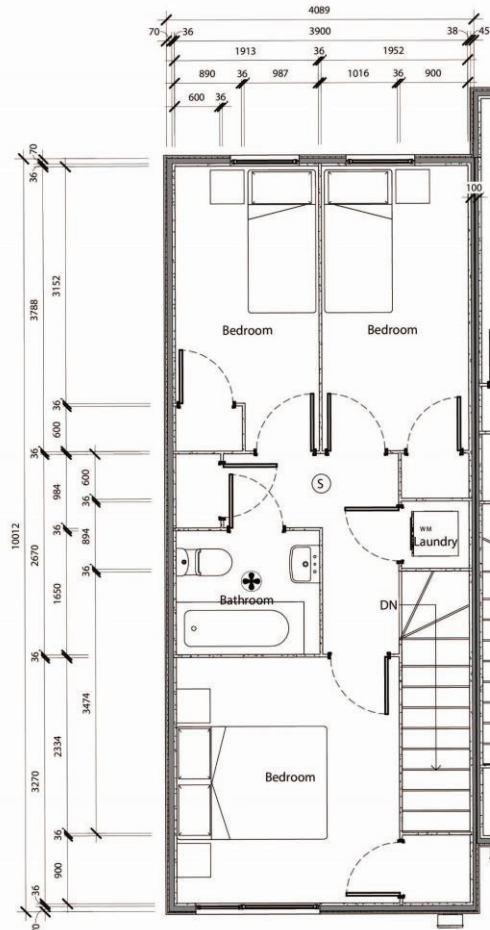
CASSINY

TYPE 3G	3 Bed	1 Bathroom
	1 Lounge	1 Carpark

Lot #	Lot Area	Ground Floor	First Floor	Total Floor Area
24	88	40	40	80



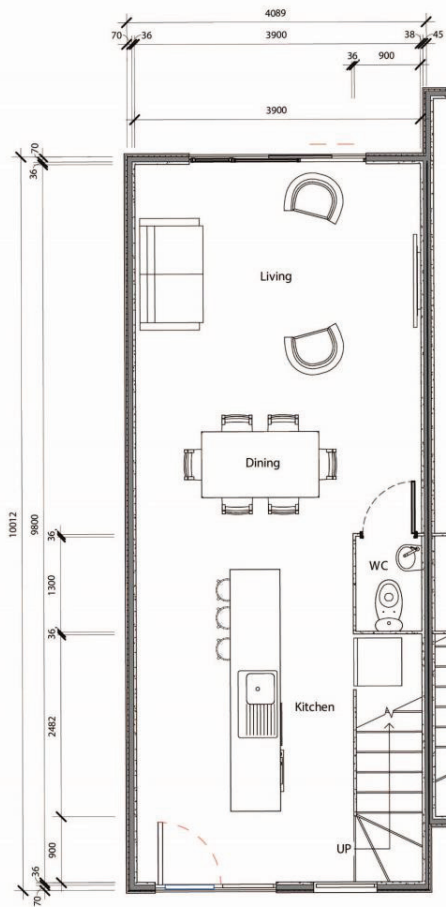
Stage 1 A1 Ground Floor Plan
1:50
note:
Type A1 end unit no windows on side wall
Type A3 intermediate unit similar to A1 refer to pt. ans for layout
Type A4 end unit windows on side wall



Stage 1 A1 First Floor Plan
1:50
note:
Type A1 end unit no windows on side wall
Type A3 intermediate unit similar to A1 refer to pt. ans for layout
Type A4 end unit windows on side wall

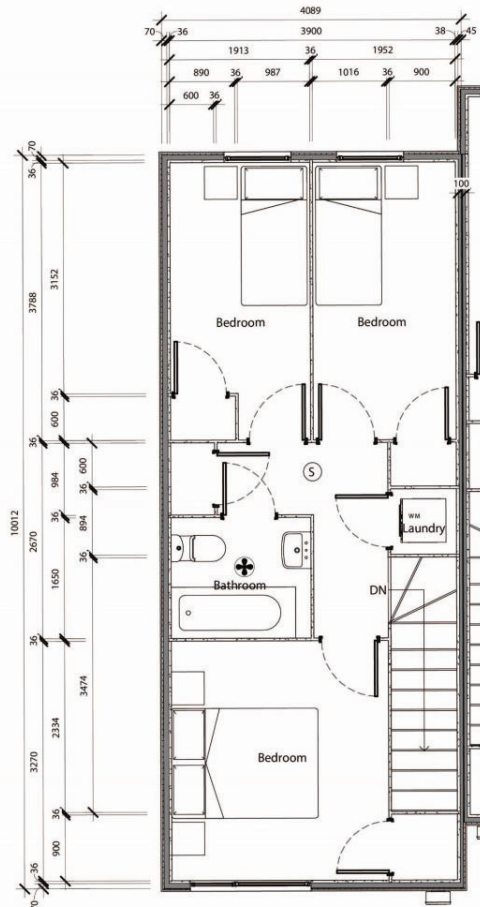
TYPE 3H	3 Bed	1 Bathroom
	1 Lounge	1 Carpark

Lot #	Lot Area	Ground Floor	First Floor	Total Floor Area
16	89	40	40	80
17	89	40	40	80
18	89	40	40	80
19	89	40	40	80
23	89	40	40	80



Stage 1 A1 Ground Floor Plan
1:50

note:
Type A1 and unit no windows on side wall
Type A3 intermediate unit similar to A1 refer to pt. area for layout
Type A4 and unit windows on side wall

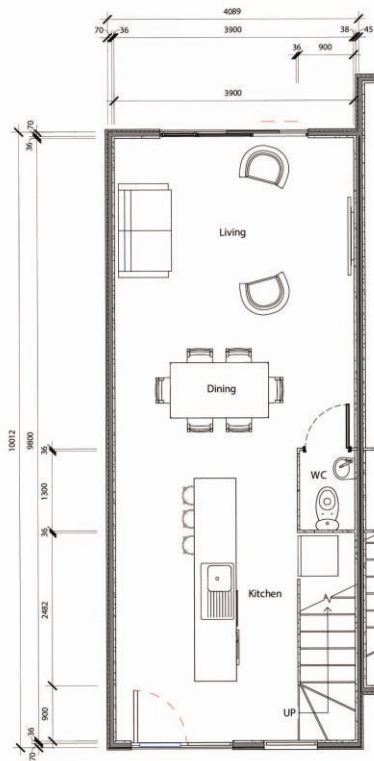


Stage 1 A1 First Floor Plan
1:50

note:
Type A1 and unit no windows on side wall
Type A3 intermediate unit similar to A1 refer to pt. area for layout
Type A4 and unit windows on side wall

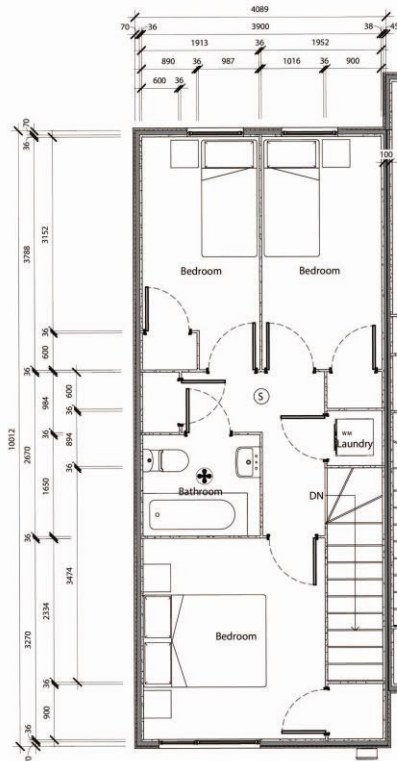
TYPE 31	3 Bed	1 Bathroom
	1 Lounge	1 Carpark

Lot #	Lot Area	Ground Floor	First Floor	Total Floor Area
22	90	40	40	80
50	90	40	40	80
51	90	40	40	80
52	90	40	40	80
53	90	40	40	80
54	90	40	40	80
55	90	40	40	80



Stage 1 A1 Ground Floor Plan

Notes:
 Type A1 and all the windows are side wall
 Type A1 internal doors and windows are all under top plate
 Type A1 and all windows are side wall

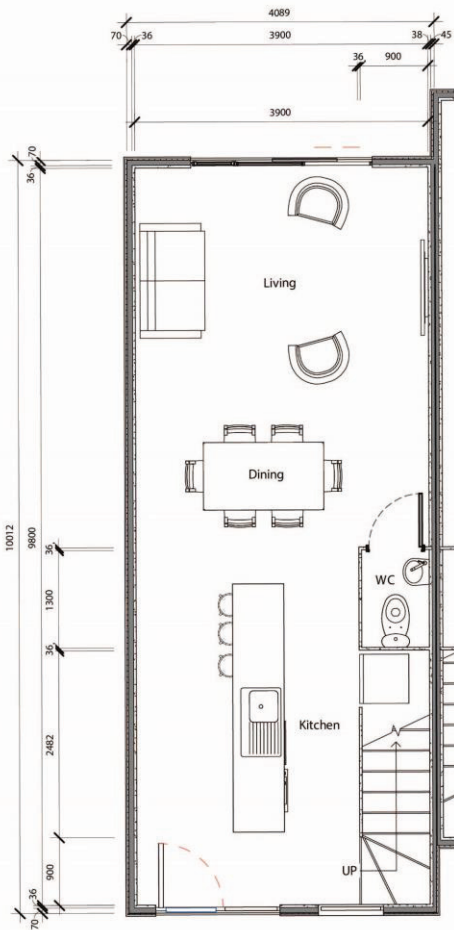


Stage 1 A1 First Floor Plan

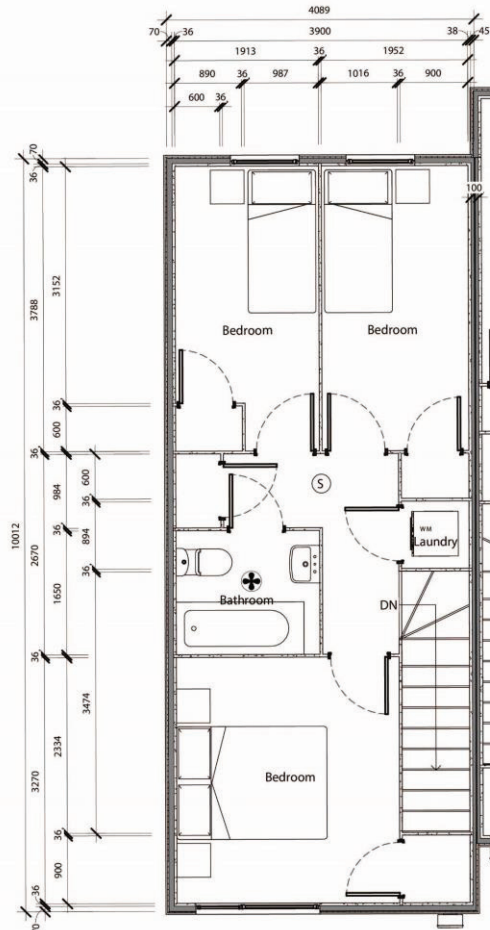
Notes:
 Type A1 and all the windows are side wall
 Type A1 internal doors and windows are all under top plate
 Type A1 and all windows are side wall

TYPE 3J	3 Bed	1 Bathroom
	1 Lounge	1 Carpark

Lot #	Lot Area	Ground Floor	First Floor	Total Floor Area
15	92	40	40	80



Stage 1 A1 Ground Floor Plan
1:50
note:
Type A1 end unit no windows on side wall
Type A3 intermediate unit similar to A1 refer to pt. ans for layout
Type A4 end unit windows on side wall

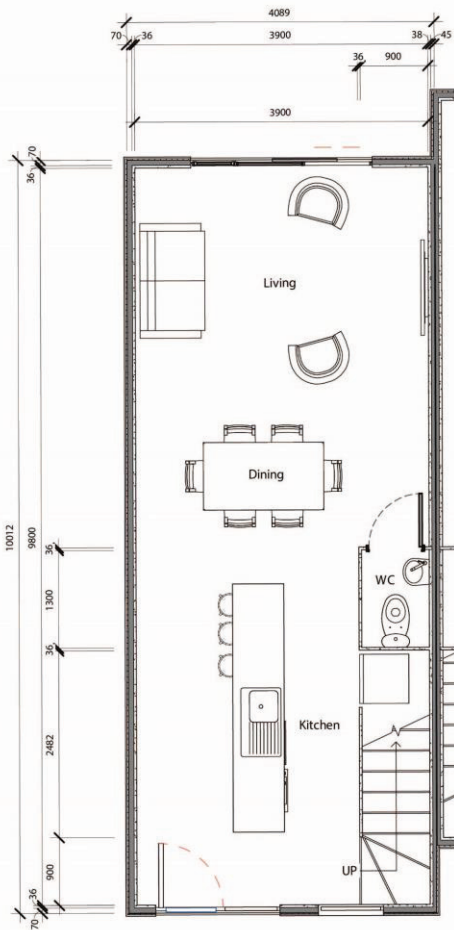


Stage 1 A1 First Floor Plan
1:50
note:
Type A1 end unit no windows on side wall
Type A3 intermediate unit similar to A1 refer to pt. ans for layout
Type A4 end unit windows on side wall

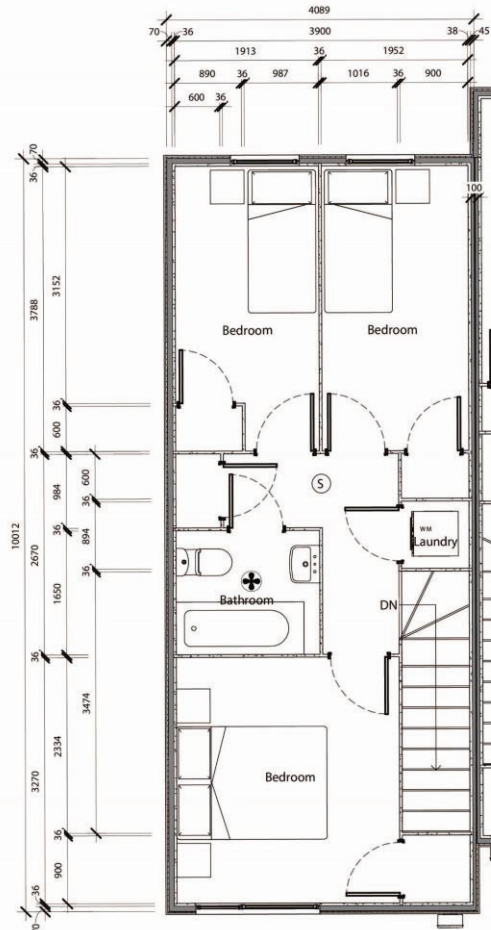
CASSINY

TYPE 3K	3 Bed	1 Bathroom
	1 Lounge	1 Carpark

Lot #	Lot Area	Ground Floor	First Floor	Total Floor Area
1	102	40	40	80



Stage 1 A1 Ground Floor Plan
1:50
note:
Type A1 end unit no windows on side wall
Type A3 intermediate unit similar to A1 refer to pt. ans for layout
Type A4 end unit windows on side wall

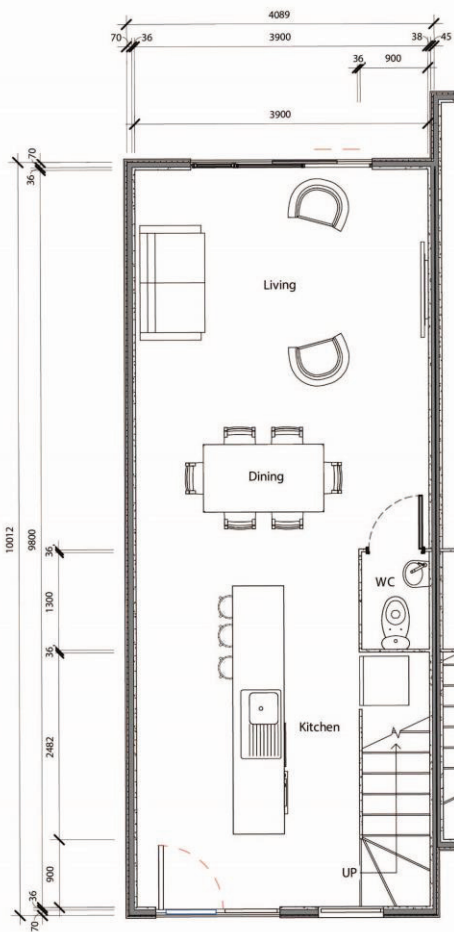


Stage 1 A1 First Floor Plan
1:50
note:
Type A1 end unit no windows on side wall
Type A3 intermediate unit similar to A1 refer to pt. ans for layout
Type A4 end unit windows on side wall

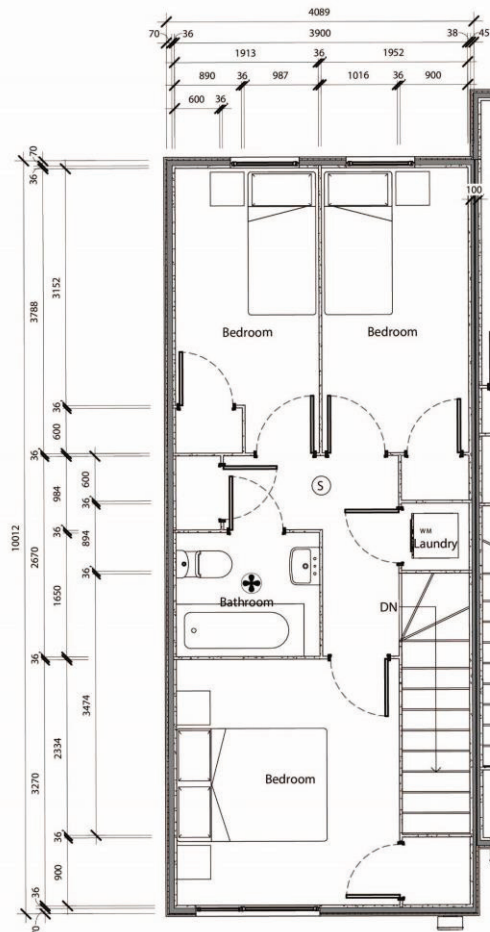
CASSINY

TYPE 3L	3 Bed	1 Bathroom
	1 Lounge	1 Carpark

Lot #	Lot Area	Ground Floor	First Floor	Total Floor Area
28	103	40	40	80



Stage 1 A1 Ground Floor Plan
1:50
note:
Type A1 end unit no windows on side wall
Type A3 intermediate unit similar to A1 refer to pt. ans for layout
Type A4 end unit windows on side wall

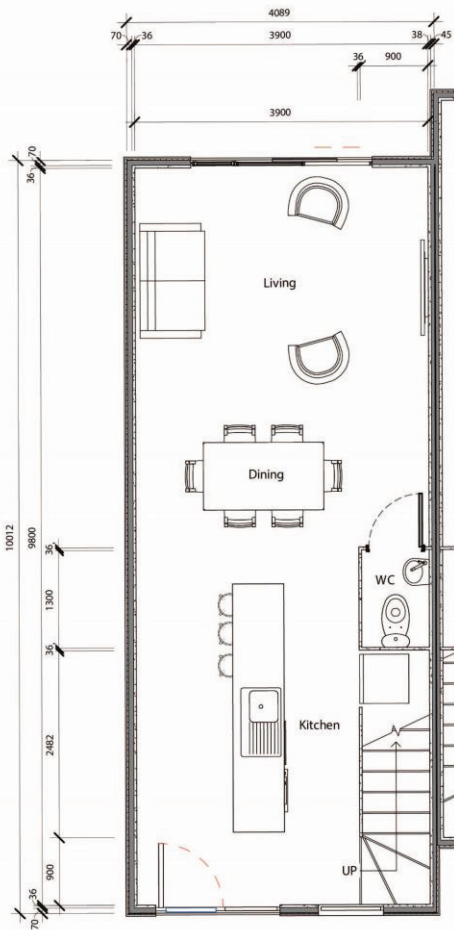


Stage 1 A1 First Floor Plan
1:50
note:
Type A1 end unit no windows on side wall
Type A3 intermediate unit similar to A1 refer to pt. ans for layout
Type A4 end unit windows on side wall

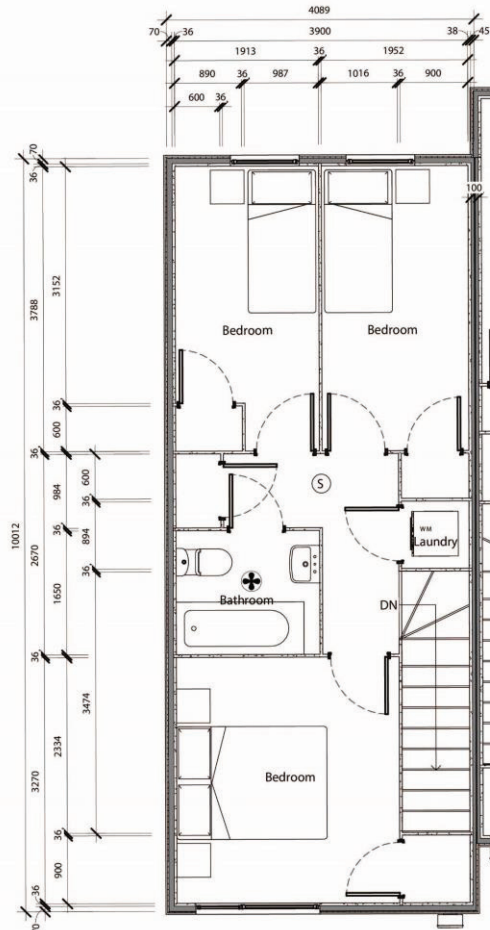
CASSINY

TYPE 3M	3 Bed	1 Bathroom
	1 Lounge	1 Carpark

Lot #	Lot Area	Ground Floor	First Floor	Total Floor Area
56	110	40	40	80



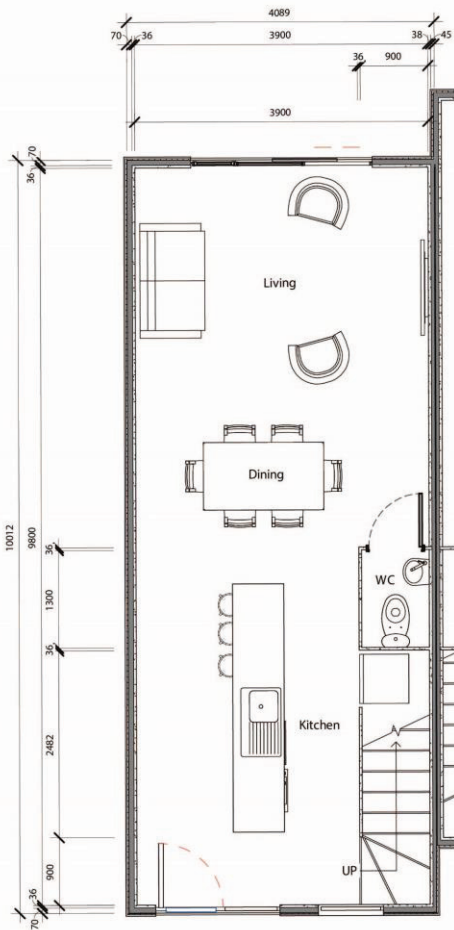
Stage 1 A1 Ground Floor Plan
1:50
note:
Type A1 end unit no windows on side wall
Type A3 intermediate unit similar to A1 refer to pt. ans for layout
Type A4 end unit windows on side wall



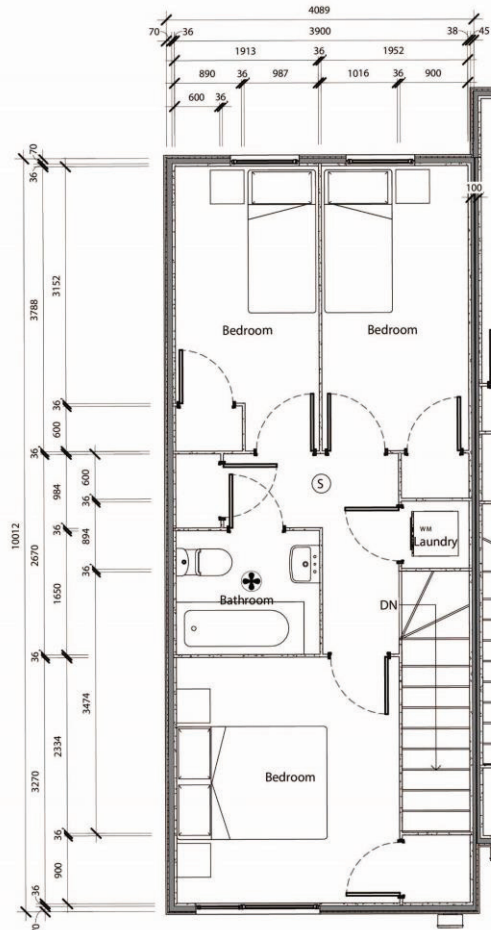
Stage 1 A1 First Floor Plan
1:50
note:
Type A1 end unit no windows on side wall
Type A3 intermediate unit similar to A1 refer to pt. ans for layout
Type A4 end unit windows on side wall

TYPE 3N	3 Bed	1 Bathroom
	1 Lounge	1 Carpark

Lot #	Lot Area	Ground Floor	First Floor	Total Floor Area
38	145	40	40	80



Stage 1 A1 Ground Floor Plan
1:50
note:
Type A1 end unit no windows on side wall
Type A3 intermediate unit similar to A1 refer to pt. ans for layout
Type A4 end unit windows on side wall

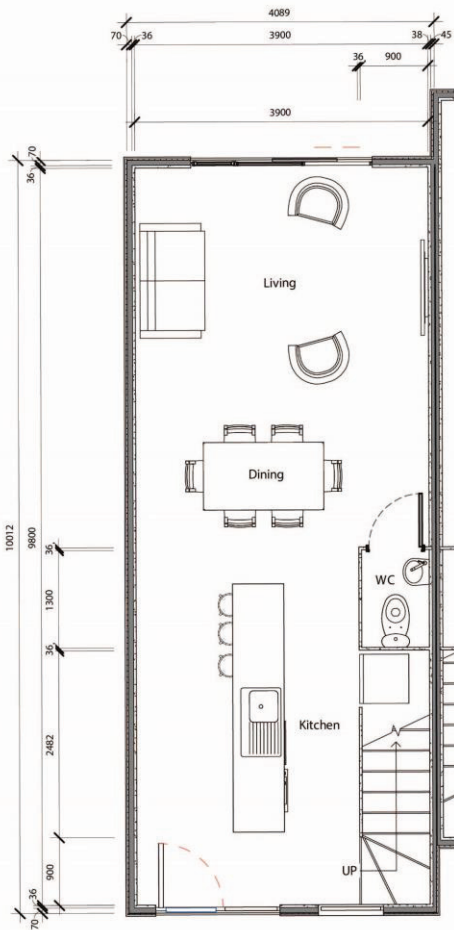


Stage 1 A1 First Floor Plan
1:50
note:
Type A1 end unit no windows on side wall
Type A3 intermediate unit similar to A1 refer to pt. ans for layout
Type A4 end unit windows on side wall

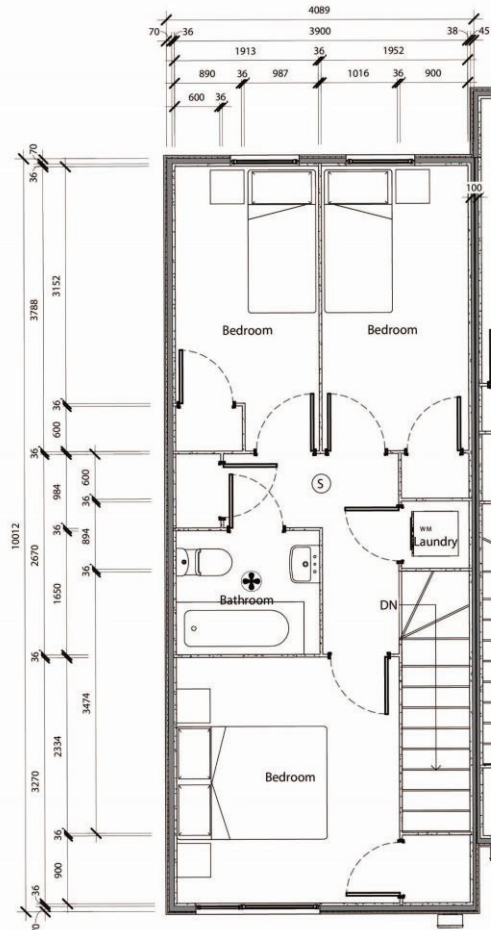
CASSINY

TYPE 30	3 Bed	1 Bathroom
	1 Lounge	1 Carpark

Lot #	Lot Area	Ground Floor	First Floor	Total Floor Area
27	162	40	40	80



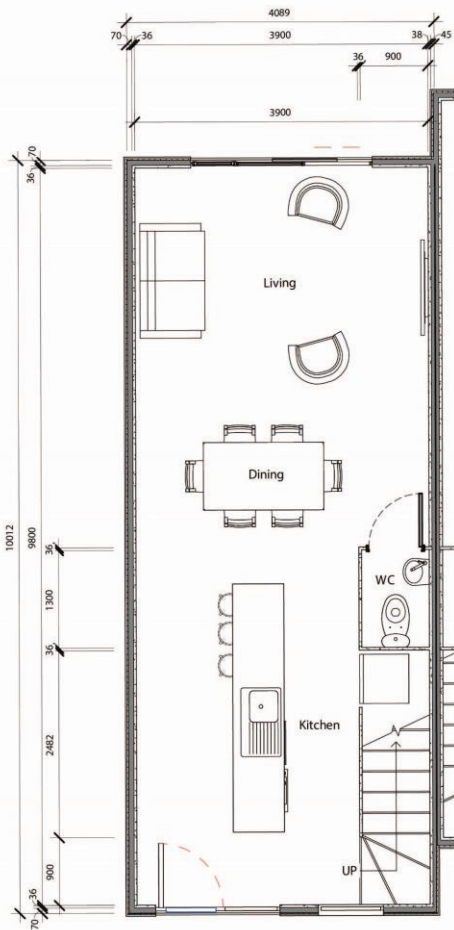
Stage 1 A1 Ground Floor Plan
1:50
note:
Type A1 end unit no windows on side wall
Type A3 intermediate unit similar to A1 refer to pt. ans for layout
Type A4 end unit windows on side wall



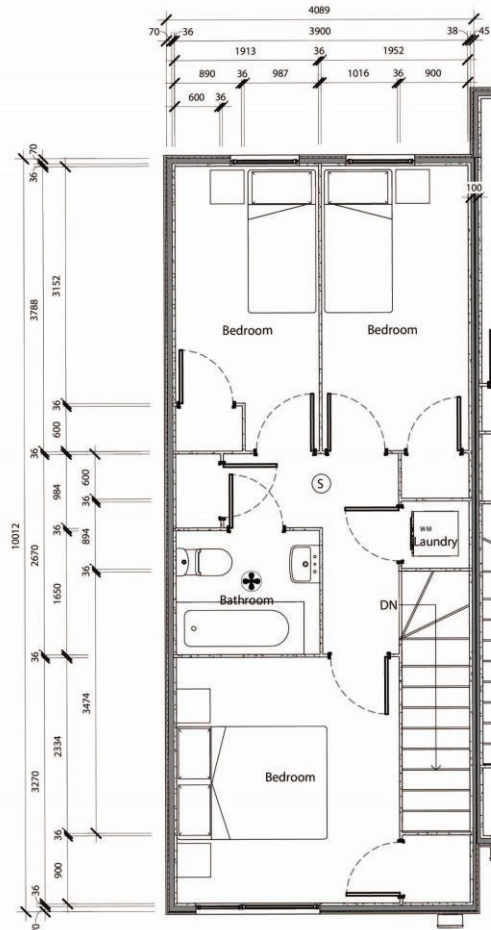
Stage 1 A1 First Floor Plan
1:50
note:
Type A1 end unit no windows on side wall
Type A3 intermediate unit similar to A1 refer to pt. ans for layout
Type A4 end unit windows on side wall

TYPE 3P	3 Bed	1 Bathroom
	1 Lounge	1 Carpark

Lot #	Lot Area	Ground Floor	First Floor	Total Floor Area
14	199	40	40	80



Stage 1 A1 Ground Floor Plan
1:50
note:
Type A1 end unit no windows on side wall
Type A3 intermediate unit similar to A1 refer to pt. ans for layout
Type A4 end unit windows on side wall

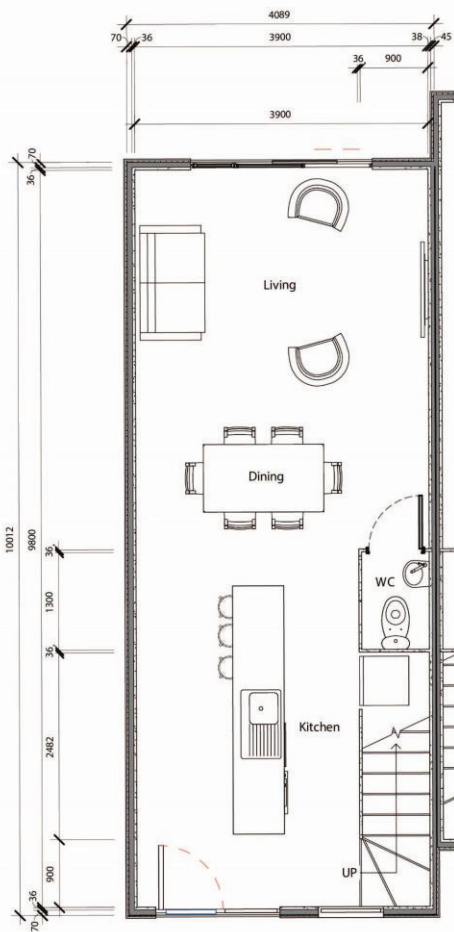


Stage 1 A1 First Floor Plan
1:50
note:
Type A1 end unit no windows on side wall
Type A3 intermediate unit similar to A1 refer to pt. ans for layout
Type A4 end unit windows on side wall

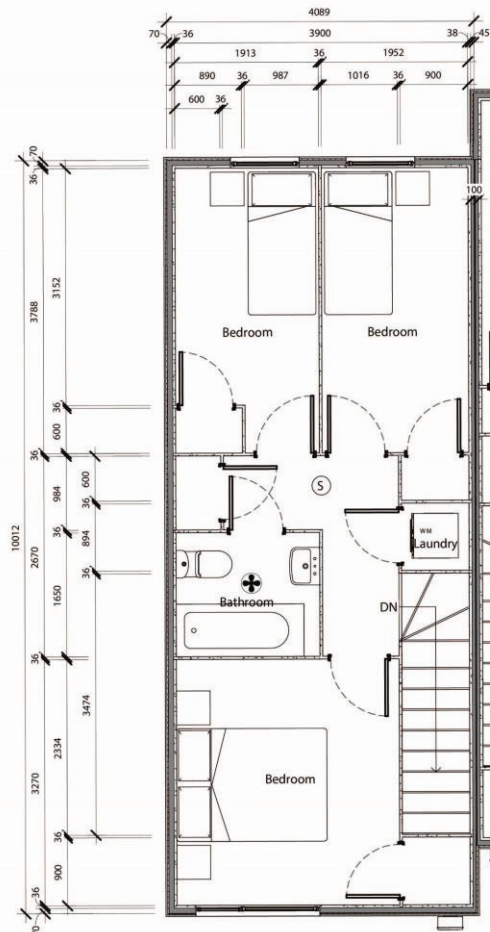
CASSINY

TYPE 3Q	3 Bed	1 Bathroom
	1 Lounge	1 Carpark

Lot #	Lot Area	Ground Floor	First Floor	Total Floor Area
57	242	40	40	80



Stage 1 A1 Ground Floor Plan
1:50
note:
Type A1 end unit no windows on side wall
Type A3 intermediate unit similar to A1 refer to pt. ans for layout
Type A4 end unit windows on side wall

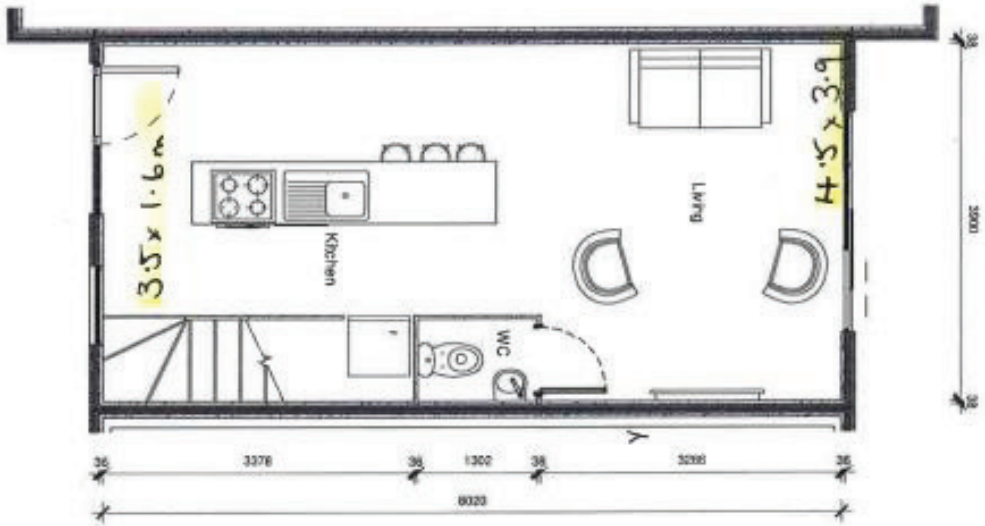


Stage 1 A1 First Floor Plan
1:50
note:
Type A1 end unit no windows on side wall
Type A3 intermediate unit similar to A1 refer to pt. ans for layout
Type A4 end unit windows on side wall

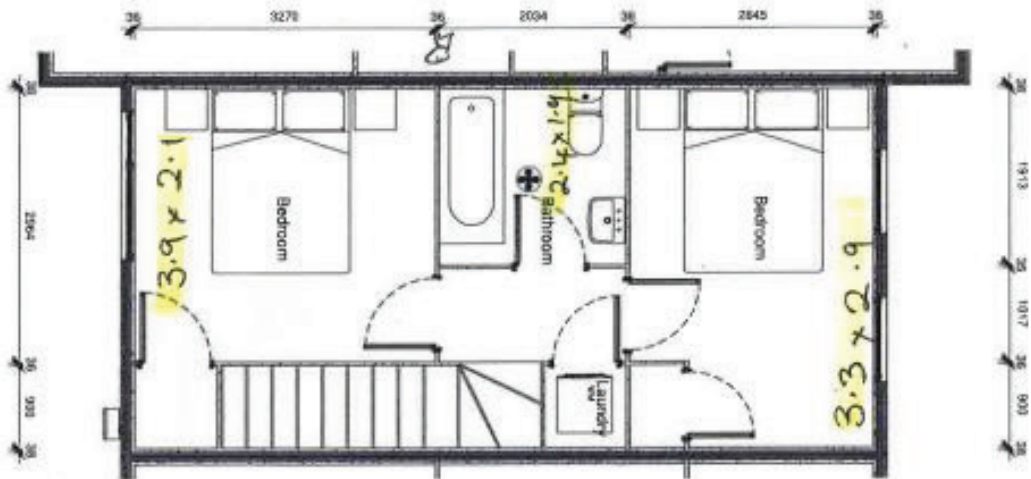
CASSINY

Bedroom Sizes	2 Bed	1.5 Bathroom
	1 Lounge	1 Carpark

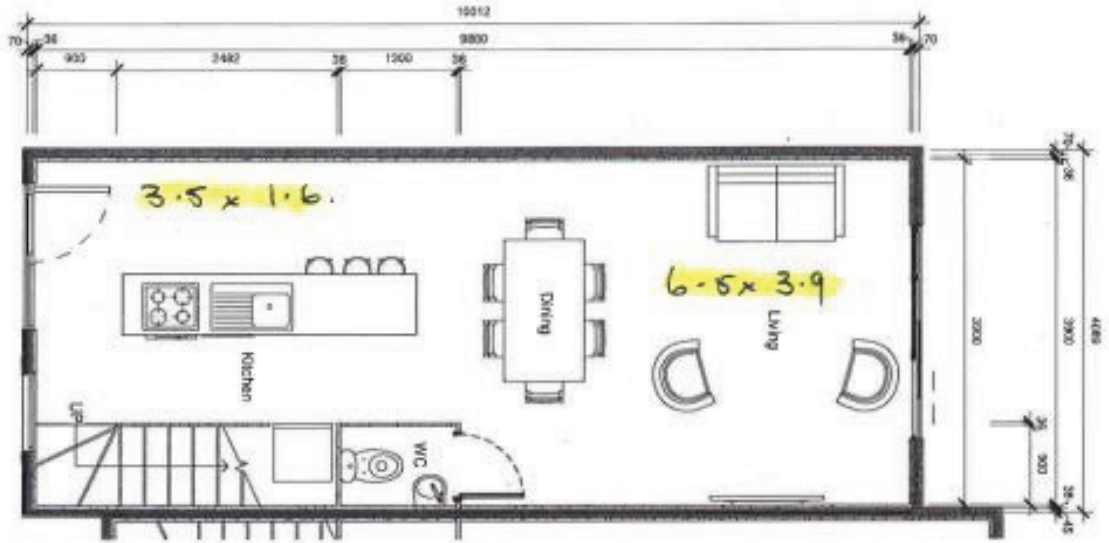
Stage 1 A2 Ground Floor Plan



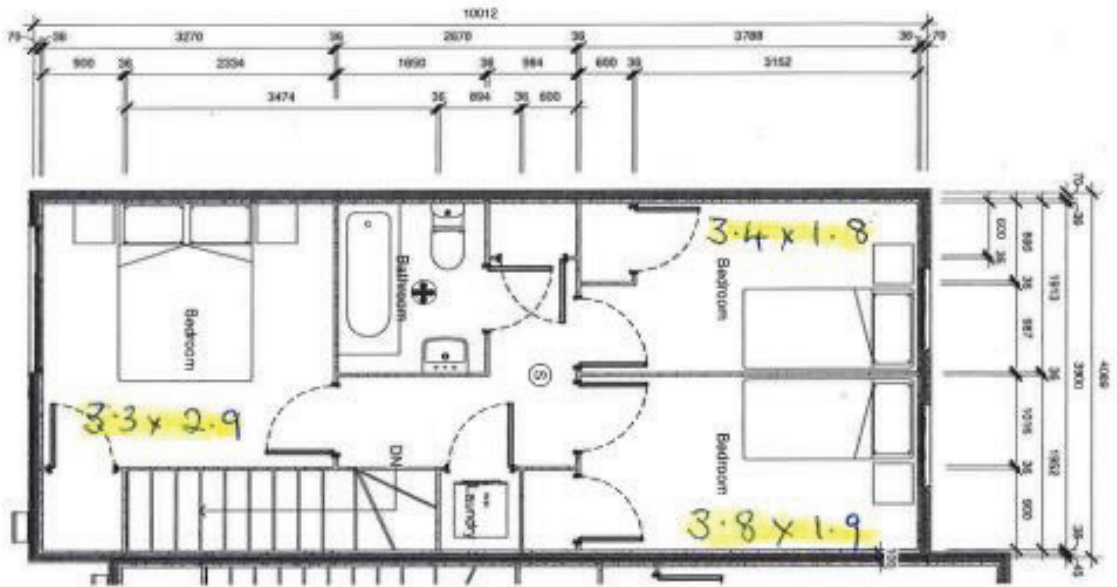
Stage 1 A2 First Floor Plan



Bedroom Sizes	3 Bed	1.5 Bathroom
	1 Lounge	1 Carpark



Stage 1 A1 Ground Floor Plan
 *Note: All floor and ceiling levels are subject to change.
 *Note: All room dimensions are subject to change.
 *Note: All wall thicknesses are 100mm.



Stage 1 A1 First Floor Plan
 *Note: All floor and ceiling levels are subject to change.
 *Note: All room dimensions are subject to change.
 *Note: All wall thicknesses are 100mm.

THE RISE 215-217 TRIANGLE ROAD MASSEY



2 BEDROOMS



1 BATHROOM



1 LOUNGE



PARKING SPACE

This is a professional rental assessment for the aforementioned property. We can provide you with a high level of Letting and Property Management services, if required.

In view to giving a current market assessment for rental for the above property, sight unseen, I have considered the following:

1. Location
2. Recent letting of similar type properties in the near vicinity
3. Type of interior and exterior
4. Size of property
5. Outlook from property
6. Condition of rental market at this time



I estimate the current rental for this 2 bedroom, 1 bathroom property to be approximately between:



\$470.00 to \$490.00 per week

The Ministry of Building Innovation and Employment statistics show that the average 2 bedroom property in Massey/Royal Heights can obtain a median weekly rental of **\$450.00 per week**. I feel the above rent could be obtained.

RENTAL
APPRAISAL

THE RISE 215-217 TRIANGLE ROAD MASSEY



3 BEDROOMS



1 BATHROOM + 1 EXTRA TOILET



1 LOUNGE



PARKING SPACE

This is a professional rental assessment for the aforementioned property. We can provide you with a high level of Letting and Property Management services, if required.

In view to giving a current market assessment for rental for the above property, sight unseen, I have considered the following:

1. Location
2. Recent letting of similar type properties in the near vicinity
3. Type of interior and exterior
4. Size of property
5. Outlook from property
6. Condition of rental market at this time



I estimate the current rental for this 3 bedroom, 1 bathroom property to be approximately between:



\$550.00 to \$580.00 per week

The Ministry of Building Innovation and Employment statistics show that the average 3 bedroom property Massey (Massey Heights) can obtain a median weekly rental of **\$550.00 per week**. I feel the above rent could be obtained.

RENTAL
APPRAISAL

PRICE LIST

Two and Three Bedroom Houses

Lot #	Land Area	House Area	Bedroom	Bathroom	Carpark	Value
1	102	80	3	1	1	\$869,000.00
2	82	80	3	1	1	\$849,000.00
3	82	80	3	1	1	\$849,000.00
4	83	80	3	1	1	\$849,000.00
5	82	64	2	1	1	\$749,000.00
6	85	64	2	1	1	\$749,000.00
7	85	80	3	1	1	\$849,000.00
8	82	80	3	1	1	\$849,000.00
9	82	80	3	1	1	\$849,000.00
10	83	80	3	1	1	\$849,000.00
11	82	80	3	1	1	\$849,000.00
12	82	64	2	1	1	\$749,000.00
13	82	64	2	1	1	\$749,000.00
14	199	80	3	1	1	\$869,000.00
15	92	80	3	1	1	\$869,000.00
16	89	80	3	1	1	\$849,000.00
17	89	80	3	1	1	\$849,000.00
18	89	80	3	1	1	\$849,000.00
19	89	80	3	1	1	\$849,000.00
20	88	64	2	1	1	\$749,000.00
21	93	64	2	1	1	\$749,000.00
22	90	80	3	1	1	\$849,000.00
23	89	80	3	1	1	\$849,000.00
24	88	80	3	1	1	\$849,000.00
25	81	80	3	1	1	\$849,000.00
26	78	64	2	1	1	\$749,000.00
27	162	80	3	1	1	\$869,000.00
28	103	80	3	1	1	\$869,000.00

PRICE LIST

Two and Three Bedroom Houses

Lot #	Land Area	House Area	Bedroom	Bathroom	Carpark	Value
29	76	80	3	1	1	\$849,000.00
30	76	80	3	1	1	\$849,000.00
31	76	80	3	1	1	\$849,000.00
32	76	80	3	1	1	\$849,000.00
33	76	80	3	1	1	\$849,000.00
34	76	80	3	1	1	\$849,000.00
35	76	64	2	1	1	\$749,000.00
36	76	64	2	1	1	\$749,000.00
37	75	64	2	1	1	\$769,000.00
38	145	80	3	1	1	\$869,000.00
39	84	80	3	1	1	\$849,000.00
40	84	80	3	1	1	\$849,000.00
41	84	80	3	1	1	\$849,000.00
42	83	80	3	1	1	\$849,000.00
43	84	64	2	1	1	\$749,000.00
44	84	64	2	1	1	\$749,000.00
45	84	64	2	1	1	\$749,000.00
46	82	64	2	1	1	\$769,000.00
47	96	64	2	1	1	\$769,000.00
48	90	64	2	1	1	\$749,000.00
49	90	64	2	1	1	\$749,000.00
50	90	80	3	1	1	\$849,000.00
51	90	80	3	1	1	\$849,000.00
52	90	80	3	1	1	\$849,000.00
53	90	80	3	1	1	\$849,000.00
54	90	80	3	1	1	\$849,000.00
55	90	80	3	1	1	\$849,000.00
56	110	80	3	1	1	\$849,000.00
57	242	80	3	1	1	\$849,000.00

SPECIFICATIONS: Terraced Houses - 215 Triangle Road, Massey

Exterior

- Concrete floors to NZ Building Code 3604 or timber strand board with timber piles to NZS3604, as directed by the Architect.
- Powder coated aluminium joinery
- Double glazed windows
- TGV10 Parkwood aluminium front entrance door Matt Ironsand colour (or similar)
- Color Cote steel roofing (colour Titania) or as directed by the Architect.
- Fascia in Color Cote steel roofing (colour Titania) or as directed by the Architect.
- Downpipes Marley RP80 Ironsand colour or Palliside integrated system as directed by the Architect.
- Soffits are painted Fibre-cement board or incorporated with Thermaspan roofing.
- H1.2 timber (or higher) external framing or structural wall panel of either Triboard or Metrapanel or Steel Frame as directed by the Architect.
- Metalcraft integrated Thermaspan roof and ceiling or similar as directed by the Architect.
- Exterior cladding: Lower levels Brick cladding to Architects choice. Upper levels Palliside integrated weatherboard system or similar as directed by the Architect.
- Inter-tenancy walls are to be to a STC55 rating and a 60/60/60 fire rating or as required by Council Building Codes. *Colours may change or vary*

Wardrobes

- All wardrobes fitted with one shelf and a hanging rail
- Sliding or hinged doors

Interior

- H1.2 timber (or higher) external framing or structural wall panel of either Triboard or Metrapanel or Steel Frame as directed by the Architect.
- Single bevel skirting as directed by the Architect.
- Single bevel architrave or rebated jams to windows and doors as directed by the Architect.
- R2.2 insulation to walls and R3.2 insulation to ceilings
- Painted interior doors with selected door hardware
- Painted Walls to balance of house.
- Interior stairs particle board, carpet finish

Kitchen

- Engineered stone/quartz bench top with breakfast bar overhang, 20mm edges
- Stainless steel under-mount sink
- Cutlery draw insert
- Overhead cabinets

Bathroom

- Shower: 900mm x 900mm shower with acrylic shower tray (64m² Units)
- Bath: Shower over bath tub (80m² Units)
- Vanity: 900mm floor mounted vanity
- Mirror: 900 mm, centred above the vanity
- Toilet: Dual flush with Soft closing toilet lid
- Toilet roll holder: Chrome
- Towel Rail: Chrome ladder (heated)

Interior Doors

- Hollow core MDF or 36mm panel doors as directed by the Architect.
- Satin paint finish in Alabaster colour to interior doors

Door Hardware

- All interior doorknobs are Schlage Locks (or similar) in Satin chrome hinges or similar as directed by the Architect.
- Satin chrome finish doorstops with rubber cushions to all doors or similar as directed by the Architect.

Plumbing

- Complete internal hot and cold water pipe work and fittings to building code
- 1 x external hose tap

Electrical

- Fully wired with 14 x double power points (including 1x double USB charging power point on kitchen bench)
- 2 x Digital TV outlet Points wired to roof. No dish provided.
- 1 x CAT 6 Ethernet wall ports
- 2 x photo-electric smoke alarm
- 1 x extractor fan in bathrooms
- 16 x surface mounted LED lights with white fittings
- 2 x exterior bulkhead light to deck/patio area
- 180l Hot water cylinders
- Stainless Steel Appliances list:

600mm stainless steel cooktop 600mm stainless steel wall oven 600mm stainless steel range hood 600mm stainless steel dishwasher

Waste disposal unit or similar as directed by the Architect.

Services

- Water, power and telecommunications cabling installed

Decorating

- Resene paint systems to complete interior of home or similar as directed by the Architect.
- All interior walls and ceiling shall have a sealer coat, and two topcoats with a satin finish
- Acrylic Enamel to all doors, skirting and architraves with a semi-gloss finish
- Acrylic Enamel to bathroom walls and ceiling with a semi-gloss finish
- Walls are stopped to a 'Level 4' high paint quality standard

Carpet

- 11mm premium carpet foam underlay
- Solution dyed nylon carpet, Light Grey colour

Car Parking

- Single outside car park provided. The development has additional visitor parking.

Warranties

- 10 year Master Builder or Certified Builders Guarantee or Builders Guarantee
- 12 month maintenance period

These specifications and plans are preliminary and maybe subject to change and the developer reserves the right to substitute any of the above specifications or appliances to an equal or better standard or product which may be subject to availability or similar as directed by the Architect.

All images are indicative only based on artist's impression and subject to variation or change.



Call or Email Sandy Williams To find out more

021488587
sandy@cassiny.nz

CASSINY